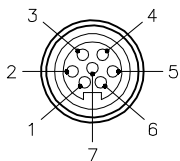
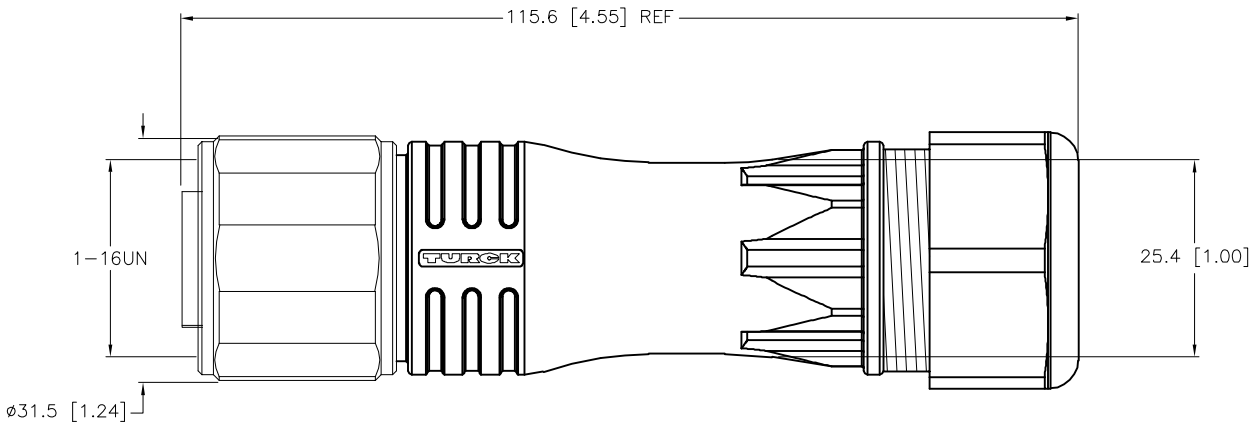
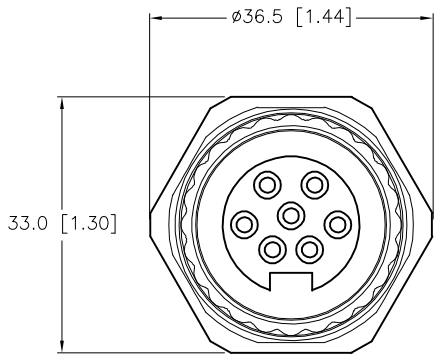


FEMALE END VIEW





SPECIFICATIONS

CONTACT CARRIER MATERIAL/COLOR	NYLON/BLACK
MOLDED HEAD MATERIAL/COLOR	NYLON/BLACK
CONTACT MATERIAL/PLATING	BRASS/GOLD
COUPLING NUT MATERIAL/FINISH	STAINLESS STEEL/PASSIVATED
RATED CURRENT [A]	8.0 A
RATED VOLTAGE [V]	600 V
CABLE RANGE	9.0 mm to 16.0 mm
TEMPERATURE RATING	-40°C to +105°C (-40°F to +221°F)
PROTECTION CLASS	MEETS IEC IP67
MAX. CONDUCTOR SIZE	14 AWG



SOURCE DRAWING - FOR REFERENCE ONLY

RELATED DOCUMENTS 1. 2. 3. 4.					3RD ANGLE PROJECTION 		THIS DRAWING IS CONFIDENTIAL AND THE PROPERTY OF TURCK INC. USE OF THIS DOCUMENT WITHOUT WRITTEN PERMISSION IS PROHIBITED.		3000 CAMPUS DRIVE MINNEAPOLIS, MN 55441 1-800-544-7769 (763) 553-7300 (763) 553-0708 fax www.turck.us					
														
MATERIAL SEE SPECIFICATIONS					ALL DIMENSIONS DISPLAYED ON THIS DRAWING ARE FOR REFERENCE ONLY		DRFT NF		DATE 09/15/15		DESCRIPTION BV 7171-0/21			
							APVD A.A.		SCALE 1=1.0					
FINISH SEE SPECIFICATIONS					CONTACT TURCK FOR MORE INFORMATION		UNIT OF MEASUREMENT MILLIMETER [INCH]				IDENTIFICATION NO. U2-23589		REV D	
							DO NOT SCALE THIS DRAWING				FILE: U2-23589		SHEET 1 OF 1	

D	REMOVED LONG PIN	AS	09/15/23	500000008855
REV	DESCRIPTION	BY	DATE	ECO NO.